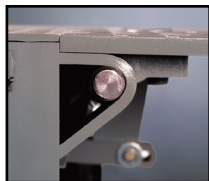


# RHM-4000 Mechanical Dock Leveler

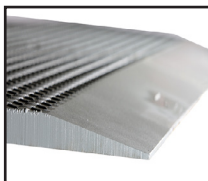
Rugged leveler provides safety, cost efficiency and the smoothest transition in the industry.



Constant Radius Rear Hinge



Two-point Crown Control



Extended Lip Chamfer



Safe-T-Strut™

## Help Reduce Chronic Injuries

Using a Smooth Transition Dock System® can minimize Whole Body Vibration (AKA “Dock Shock”) by up to 16%<sup>2</sup>; increasing productivity through reduced chronic tibial injury and absenteeism.

- » Constant Radius Rear Hinge reduces the gap at the rear of the leveler to a constant 1/3” space between the leveler deck and rear weldment; no matter the leveler position.
- » Two-point Crown Control reinforces the front hinge and reduces the crown at the transition point from leveler deck to leveler lip.
- » Extended Lip Chamfer reduces the impact felt when transitioning from the leveler lip to the trailer bed.
- » “Dock Shock” reduction is increased to 50% when Smooth Transition Dock System is implemented with modern forklift design; compared with other levelers.<sup>2</sup>

## Dependable Operating System

Rite-Hite® surpasses conventional hold-down assemblies through three dependable components; creating the most reliable system in the industry.

- » Ramp control includes 9-tooth pawl and ratchet bar that provides the most ‘tooth-to-bar’ connection in the industry.
- » Tension relief allows the system to relieve the pressure of trailer raise, while maintaining even loading dock and trailer height.
- » Hydrachek Lip assist system provides positive lip extension and yieldable lip; helps to protect the operator from injury and dock leveler from damage.

## Secure Loading & Unloading Operations

Rite-Hite® structural design allows the leveler to maintain constant contact with a trailer, helping to remove any unexpected obstacles.

- » Air ride suspensions and uneven loads can cause an unsafe separation between trailer floor and leveler lip. The L-Beam stringer (with two extra beams compared with competitors) increases deck strength and allows the leveler to flex up to 4” under its own weight, empowering the lift operator to drive with the confidence that they will not endure jarring impacts caused by a hazardous gap; especially when exiting.

## Enhance Safety During Maintenance

The Safe-T-Strut™ through-the-lip design provides communication and safety from any angle inside or outside the building.

- » The central, through-the-lip location keeps the strut in place throughout the entire operating range of the leveler. This position enables it to withstand an accidental impact of a 10,000 lb fork truck at 4 mph.
- » Visibility from inside the building indicates to all that maintenance is being performed and helps prevent accidental operation, keeping personnel safe during scheduled maintenance.

## Achieve Lower Lifetime Ownership Costs

Unique structural engineering stands firm under extreme warehouse demands to lower repair and maintenance costs, while increasing product lifespan.

- » The formed front header (connection between deck and leveler lip) completes the four-sided rectangular box construction and includes interlocking and welded stringers to create a stronger bond, increase overall strength and help limit lifetime maintenance downtime issues.
- » Certified to meet and exceed ANSI MH30.1 performance testing standards.

## Industry Leading Warranty

Rite-Hite warranties are based on material handling gross weights and frequency of use. Consult your Rite-Hite Representative to discuss qualifications through the Dock Leveler Investment Guide (DLIG).

- » 10-Year non-prorated warranty (based on DLIG).
- » Up to 20-Year limited money back-warranty (based on DLIG).

# Specifications

## General Description

The RHM-4000 Mechanical Dock Leveler offers safety and reliability the industry expects from Rite-Hite. As the only dock leveler with a Smooth Transition Dok System™, the RHM-4000 is proven to reduce whole body vibration<sup>1</sup>, helping to protect people and material handling equipment while increasing productivity.

### Leveler Deck

Smooth Transition Dok System includes:  constant radius rear hinge to reduce bumps and gaps at rear of leveler,  two point crown control to evenly distribute weight load and extend the life of the front hinge,  extended lip chamfer to improve smoothness by 20%,  8" (203mm) deck beam spacing to support use of  3-wheel and  4-wheel forklifts, and  4" (101mm) Self-Flex Deck does not require the weight of the forklift to accommodate unbalanced/unlevel trailer beds as the forklift travels in to and out of the trailer in service.

**Leveler Length (ft.):**  6  8  10  Enter Below

**Leveler Width (ft.):**  6  6.5  7  Enter Below

**Pit Length:** \_\_\_\_\_ **Pit Width:** \_\_\_\_\_ **Pit Depth:** \_\_\_\_\_

### Leveler Lip

**Standard Lip Length (in.):**  16  18  20.

**Lip keepers** with  cross-traffic support and  automatic night locks help prevent building break-in attempts through dock areas.

**Hydrachek Lip Assist**  **Extended Lip Chamfer**

**Lip Crown:**  2 Pt Increased Crown Control

2 Pt Reduced Crown Control  2 Pt Crown Control (STD)

**Lip Taper (in.):**  TPR2  TPR3  TPR4  TPR5  TPR5.5

Notch2  Notch3  Notch4  Notch5  Notch5.5

## Standard Leveler Features

### Two bumpers:

Less  RH410-10P1  RHV420-11P1  RHV420-11SFP1  
 RH612-14P1  RHV620-11P1  RHV620-11SFP1

**Toe Guard:**  Grey (Integral) & Yellow (Full-range toe guard)

Grey (INT & FRTG)  Yellow (INT)

Yellow and Black Stripes (INT & FRTG)

**Weatherseal:**  NB-1 Factory Installed  NB-1 Kit (Field)

PT-2 Factory Installed  PT-2 Kit (Field)

### Leveler Capacity

**Rite-Hite levelers are certified to exceed ANSI MH30.1 dock leveler performance testing standards.**

**Leveler capacity by application:**  C  D  F

**Optional MH14.1-1978 decals:**  MH14.1-1978 37,000 (C)

MH14.1-1978 46,000 (D)  MH14.1-1978 59,000 (F)

### » Informational signs/decals languages:

French Canadian  Spanish  Chinese

Portuguese  English (Standard)

## Operation

**1.** The platform is raised when the dock attendant activates the release-chain release assembly, located at the rear of the platform. The hinged lip fully extends during upward travel. **2.** The attendant walks the platform down onto the truck bed. **3.** The attendant pulls a second chain at the front of the platform during walk-down if truck beds are below dock height. The standard 16" (406 mm) lip extends 11" (280 mm) beyond the standard 4" (102 mm) bumper. The platform is designed to compensate for canted truck beds up to 4" (102 mm) and remains flush with the rear of the pit to help eliminate pinch points.

## Mechanical

Hold-down system offers a nine-tooth pawl and ratchet bar that provides maximum surface engagement.

The ramp control, paired with Rite-Hite's tension relief mechanism, counteracts trailer rise pressure by releasing one tooth at a time, until height of deck and trailer is equal.

Exclusive Hydrachek lip assist system reinforces leveler lip by absorbing shocks encountered during operation.

## Maintenance Features

**Integral Safe-T-Strut™ Maintenance Support System** extends through the lip and provides:  interior visual notification,  continuous protection even if impacted by a forklift and  lock out tag out.

## Standard Warranty

Five-year parts and one-year labor warranty. All warranties subject to standard limitations on liability. 12-Month Limited Money-Back Guarantee of Customer Satisfaction\*. Up to 20-Year Money-Back Warranty based on the Dock Leveler Investment Guide (DLIG).

## Dock Leveler Investment Guide (DLIG)

Dock Leveler Investment Guide (DLIG)

**Max. Gross Load (1,000 lbs.):**

5  7.5  10  12.5  15  17.5

**Trucks/Day:**

0-8  9-16  17-24

## Specialty Leveler Features

**Reinforced Rear Frame (Specialty Floors)**

**Self-Standing Frame**

**Smooth Deck Lip**

**Abrasive Ramp Surface**

## Cold Storage / Corrosive Applications

**Stainless Steel Hinge Pins**

**Zinc metalized finish**

### Insulation Options:

Foam (Deck)

Foam (Deck & Stringers)\*\*

Thermal Paint Barrier (\*\*DLIG not avail. w/ foam options)

## Client Info

Company Name \_\_\_\_\_

Date \_\_\_\_\_



**RHM4PKG**  
[www.ritehite.com](http://www.ritehite.com)

8900 North Arbon Drive  
Milwaukee, WI 53223, USA

**P** 414-355-2600 (800-456-0600)

**F** 414-355-9248

Rite-Hite®, Safe-T-Lip®, Safe-T-Strut®, Smooth Transition Dok System®, Dok-Commander® and Hydra-Rite® are trademarks of Rite-Hite Holding Corporation. Rite-Hite products are covered by one or more U.S. patents with other U.S. and foreign patents pending. The information herein is provided as a general reference only regarding the use of the applicable products. The specifications stated here are subject to change.

(1) "DOCK SHOCK: The Impact of Whole-Body Vibration on an Aging Workforce" (November 2013)

(2) Lavender, Ph.D., S., & Mehta, M.S., J. (2012). Ergonomic evaluation of new dock levelers on the tibial shock experienced by fork truck operators when loading and unloading trailers. Unpublished raw data, Institute for Ergonomics, Ohio State University, Columbus, OH.