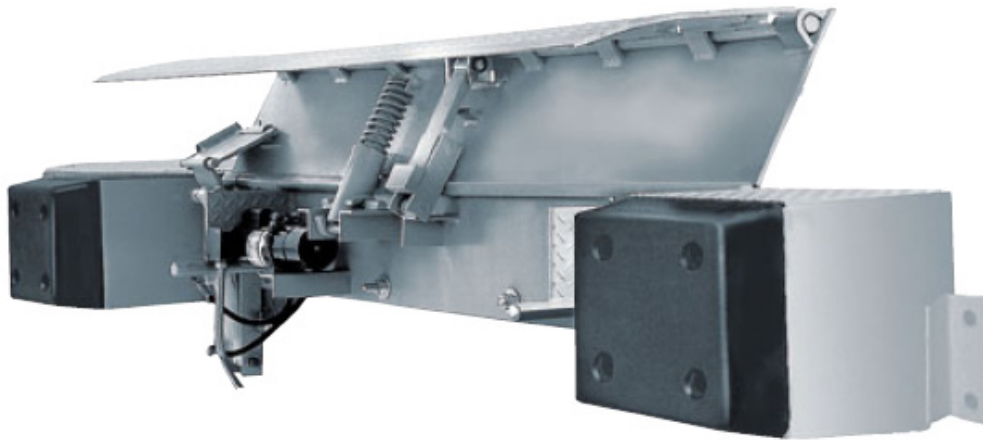


RHE-300 Hydraulic Edge-O-Dock™ Leveler

Ideal for loading docks servicing trailers with consistent bed heights.



Ease of Operation

Hydraulic Edge of Dock levelers are constructed with high strength low-alloy steel for increased durability. They offer an easy push-button operation for a more ergonomic solution.

- » Hydraulic Control Box has effortless Power-up/Power-down button operation for leveler and lip positioning, helping provide increased control and safety.
- » Dok-Commander® Combination Control Panel (option) gives the ability to integrate the hydraulic controls with all other Rite-Hite® loading dock equipment controls: vehicle restraint, light communication, doors, and more.
- » Maintenance Strut doubles as an operating handle, which can be used during routine maintenance.

Convenient Installation & Maintenance

Installed on the face of the loading dock, an Edge of Dock leveler does not require a pit, which helps keep installation scope smaller, costs to a minimum, and easier clean-up.

- » No pit necessary with a hydraulic edge of dock leveler, which helps decrease installation time, prevents pest and contaminant infiltration, and makes clean up quick and easy.
- » Grease Fittings help improve leveler operation while reducing maintenance needs and cost.
- » Operating Handle doubles as a functioning maintenance strut for enhanced personnel protection during maintenance, while eliminating additional equipment purchases.

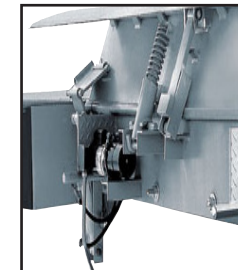
Industry Leading Warranty

Rite-Hite warranties are backed by a vast network of representatives and exclusive leading planned maintenance programs, helping to ensure that products perform to their full potential.

- » 12-Month Limited Money-Back Guarantee of Customer Satisfaction
- » 1-Year Parts & Labor
- » 90-Days Molded Bumper Warranty



Push Button Controls



Hydraulic Components
& Motor



Grease Fittings

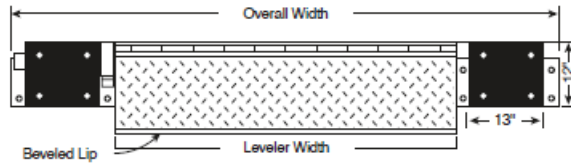
Specifications

General Description

The RHE-300 Hydraulic Edge-O-Dock™ Leveler offers an economic solution for facilities with light loads, limited variation in vehicle heights, and limited internal working space. Hydraulic controls make operation fast and efficient, while its pit-free design helps decrease installation time, limit points of entry, and prevent pest and contaminant infiltration.

Nominal Dimensions

| Leveler Width | Overall Width |
|--|----------------|
| <input type="checkbox"/> 66" (1676 mm) | 102" (2591 mm) |
| <input type="checkbox"/> 72" (1829 mm) | 108" (2743 mm) |
| <input type="checkbox"/> 78" (1981 mm) | 114" (2896 mm) |
| <input type="checkbox"/> 84" (2134 mm) | 120" (3048 mm) |



Standard Features

- » Capable of servicing trucks 3" (76 mm) above and 3" (76 mm) below dock level.*
- » 16" (406 mm) bumpers
- » 13" (330 mm) ramp in the stored position
- » 12" (305 mm) standard lip
- » Deck and lip are 3/8" (10 mm) to 5/8" (16 mm) thick (depending on capacity) high strength, low-alloy steel (55,000 psi minimum tensile strength). Lip is chamfered for smooth transition.
- » Push-button controls for power-up/power-down.

Operation

1. To raise, push "up" button and hold until deck plate is approximately 30 degrees past vertical. Release button.
2. Push "down" button and hold until lip makes contact with truck bed. Release button.
3. When the truck pulls away, the leveler returns to the stored position. The unit can be returned to the stored position with the truck in place. The lip will not stay extended without the truck in place.

Hydraulics

A 2" (51 mm) bore double acting cylinder with 1" (25 mm) diameter chrome plated piston rod is powered by 100 CIPM bi-directional pump.

Motor

110v/1ph/60Hz 5 amp load. Available in 240 and 480 VAC.

Edge of Dock Features

Capacities:*

- 20,000 lbs (9,070 kg) -- 5,000 Gross Load (2267 kg)
- 30,000 lbs (13,600 kg) -- 10,000 Gross Load (4535 kg)
- 40,000 lbs (18,144 kg) -- 15,000 Gross Load (6803 kg)

Lip:

- 12" (305 mm)
- 14" (355 mm)
- Tapered Lip

Treaded Transition Plate:

- 1/4"x108"x12" 1/4"x108"x12" w/ Bevel & Bend
 - 1/4"x108"x12" with Bend 1/4"x108"x12" with Bevel
 - 1/4"x108"x18" 1/4"x108"x18" w/ Bevel & Bend
 - 1/4"x108"x18" with Bend 1/4"x108"x18" with Bevel
 - 1/4"x108"x24" 1/4"x108"x24" w/ Bevel & Bend
 - 1/4"x108"x24" with Bend 1/4"x108"x24" with Bevel
- (for mounting where sufficient dock edge steel is not present)

Voltage:

- Single Phase _____
- 3-Phase _____

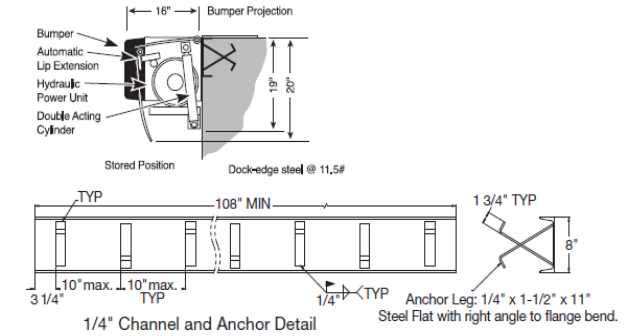
Bumpers:

- 12x13 Steel Face Bumper/Blocks 18x10 Bumpers/Blocks
- 18x10 Steel Face Bumper/Blocks 24x12 Bumpers/Blocks
- 24x12 Steel Face Bumper/Blocks 18x10 Bumper/No Blocks
- 24x12 Bumper/No Blocks Std 12x13 Bumpers/Blocks
- Pads Only No Blocks/No Pad
- Dock Face Plate
- Post Office Model with 2" (51 mm) cart stop
- Hot dipped galvanized (may extend lead time)
- Built-in telescopic handle

*Due to the limited length of EOD levelers, its structure is subjected to greater dynamic load than on longer levelers. Capacities are based on ideal operating conditions (i.e. maximum gross load traveling at 3 mph on 10% grade or less); if the application exceeds this condition a higher capacity leveler must be selected.

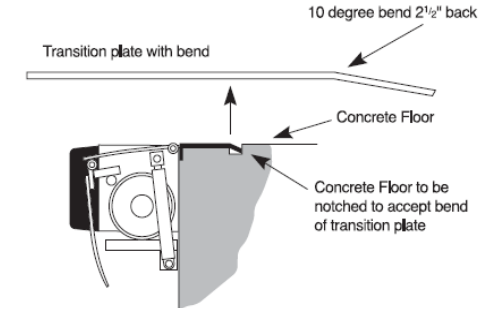
#1 New Construction

Standard installation with poured in curb channel.



#2 Existing Construction

Transition plate required for existing construction with curb angle. If no angle is present, additional face plate required.



#3 Pit Installation

Please contact a Rite-Hite Representative for details.

Client Info

Customer Name: _____

General Contractor: _____

Quantity: _____

Date: _____