

RHJ-5000 Jumbo™ Full-Width Dock Leveler

Full-width dock leveler enhances productivity with unparalleled access to a variety of load configurations.



Help Reduce Chronic Injuries

Using a Smooth Transition Dok System® can minimize Whole Body Vibration (AKA “Dock Shock”) by up to 16%²; increasing productivity through reduced chronic tibial injury and absenteeism.

- » Constant Radius Rear Hinge reduces the gap at the rear of the leveler to a constant 1/3” space between the leveler deck and rear weldment; no matter the leveler position.
- » Two-point Crown Control reinforces the front hinge and reduces the crown at the transition point from leveler deck to leveler lip.
- » Extended Lip Chamfer reduces the impact felt when transitioning from the leveler lip to the trailer bed.
- » “Dock Shock” reduction is increased to 50% when Smooth Transition Dok System is implemented with modern forklift design; compared with other levelers.²

Secure Loading & Unloading Operations

Rite-Hite® structural design allows the leveler to maintain constant contact with a trailer, helping to remove any unexpected obstacles.

- » Air ride suspensions and uneven loads can cause an unsafe separation between trailer floor and leveler lip. The L-Beam stringer (with two extra beams compared with competitors) increases deck strength and allows the leveler to flex under its own weight, empowering the lift operator to drive with the confidence that they will not endure jarring impacts caused by a hazardous gap; especially when exiting.

Unparalleled End-load Access

Unique design paired with industry leading safety features, like Safe-T-Lip®, increases productivity while eliminating interference of pit wall and bumpers for the most efficient below-dock service.

- » The 102” wide leveler deck, with one-piece platform, provides unobstructed, full width & height access to a variety of load configurations.
- » Safe-T-Lip® helps prevent vacant drop-off, while its slotted-lip design safely positions the barrier out of the way for unobstructed end-load access.
- » Certified for a total of five capacities offered under the ANSI MH30.1 performance testing standards

Enhance Safety During Maintenance

The Safe-T-Strut™ through-the-lip design provides communication and safety from any angle inside or outside the building.

- » The central, through-the-lip location keeps the strut in place throughout the entire operating range of the leveler. This position enables it to withstand an accidental impact of a 10,000 lb fork truck at 4 mph.
- » Visibility from inside the building indicates to all that maintenance is being performed and helps prevent accidental operation, keeping personnel safe during scheduled maintenance.

Achieve Lower Lifetime Ownership Costs

Unique structural engineering stands firm under extreme warehouse demands to lower repair and maintenance costs, while increasing product lifespan.

- » The bar style front header (connection between deck and leveler lip) completes the four-sided rectangular box construction and includes interlocking and welded stringers to create a stronger bond, increase overall strength and help limit lifetime maintenance downtime issues.
- » Certified to meet and exceed ANSI MH30.1 performance testing standards.

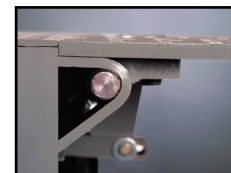
Industry Leading Warranty

Rite-Hite warranties are based on material handling gross weights and frequency of use. Consult your Rite-Hite Representative to discuss qualifications through the Dock Leveler Investment Guide (DLIG).

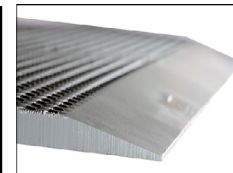
- » 10-Year non-prorated warranty (based on DLIG).
- » Up to 20-Year limited money back-warranty (based on DLIG).



Constant radius rear hinge



Two-point crown control



Extended Lip Chamfer



Full-width End-load Access

Specifications

General Description

The RHJ-5000 High Capacity Dock Leveler makes it easy to service wider trucks with lower bed heights and full-width loads. With an 102" (2499 mm) wide, one-piece platform, forklifts can handle every load, without obstruction. Increase your productivity with the Jumbo leveler's ability to service the entire width of the trailer.

Leveler Deck

Smooth Transition Dok System includes: constant radius rear hinge to reduce bumps and gaps at rear of leveler, two point crown control to evenly distribute weight load and extend the life of the front hinge, optimized lip chamfer to improve smoothness by 20%, 18" (203mm) deck beam spacing to support use of 3-wheel and 4-wheel forklifts, and Self-Flex Deck does not require the weight of the forklift to accommodate unbalanced/unlevel trailer beds as the forklift travels in to and out of the trailer in service.

Leveler Length (ft.): 8 10 12 Enter Below

Leveler Width (ft.): 8.5 Enter Below

Pit Length: _____ **Pit Width:** _____ **Pit Depth:** _____

Leveler Lip

Standard Lip Length (in.): 20" **Exclusive Safe-T-Lip® (STL) barrier** offered as 20" (508 mm) lip w/ 7" (178 mm) STL or 20" (508 mm) Slot Cover Lip w/ 7" (178 mm) STL helps protect against open dock accidents, helping to stop a 10,000 lb. (4,535 kg) load moving at 4 mph (6 kph).

» Unique Safe-T-Lip can be easily positioned out of the way for end-loading. *(only with STL opt).*

Manual End-Load Legs

Lip keepers with cross-traffic support and automatic night locks help prevent building break-in attempts through dock areas.

Infinite Lip Control **Extended Lip Chamfer**

Lip Crown: 2 Pt Increased Crown Control 2 Pt Reduced Crown Control 2 Pt Crown Control (STD)

Lip Taper (in.): TPR2 TPR3 TPR4 TPR5 TPR5.5

Notch2 Notch3 Notch4 Notch5 Notch5.5

Leveler Capacity

Rite-Hite levelers are certified to exceed ANSI MH30.1 dock leveler performance testing standards.

Leveler capacity by application: F G J L M

Optional MH14.1-1978 decals: MH14.1-1978 59,000 (F)

MH14.1-1978 66,000 (G) ANSI 1978 76,000 (J)

ANSI 1978 81,000, (L) ANSI 1978 101,000, (M)

Standard Leveler Features

Toe Guard: Standard Grey (Integral) & Yellow (Full-range toe guard) Grey (INT & FRTG) Yellow and Black Stripes (INT & FRTG) Yellow (INT & FRTG)

Weatherseal: NB-1 Kit (Field Installed) PT-2 Kit (Field)

Operation

1. To raise the platform, push and hold the "Raise" button on the control box. **2.** After the lip clears the trailer floor, push and hold the "Lip Out" button while continuing to hold the "Raise" button to extend the lip or raise the platform until the lip fully extends. **3.** Release the push buttons to allow the leveler platform and lip to lower to the truck bed, above and below dock height, without manual chain pulling. **4.** To store the dock leveler, press the "Raise" button until the lip clears the trailer bed and release the button to return the dock leveler to stored position.

Hydraulics

The hydraulic pump, manifold & oil reservoir are contained in an integral assembly. Hoses routed under the platform, away from debris. All fittings are JIC flange or "O" ring flange. Biodegradable hydraulic fluid or MIL-5606 Oil-based hydraulic fluid options available. The platform is raised by Hydra-Rite™ Hydraulic System 4" Diameter Main Cylinder, 2-1/2" Diameter Lip Cylinder, 1 HP Power Unit. Non-adjustable hydraulic velocity fuse limits platform free fall to 3" (76mm).

Combination Power Unit: STR-4200

Remote Power Unit: Horizontal Vertical

Dok-Lok® Models (Provided separately with Lok purchase):

RHR-1000/4000 RHR-600 VBR-100

SHR-5000 (w/ Anti-Rotation Hook) VBR-300 VBR-400

VBR-600 VBR-300ALP SHR-5000 (w/o Anti-Rotation Hook)

VBR-300MNL STR-4100 (Replaces existing STR-4000)

STR-4200 STR-4100 (Replaces existing restraint)

Electrical/Controls

All controls are mounted in an interlock capable, NEMA 4X, gasketed control panel and enclosure assembly.

Ship Controls w/ Leveler: CB Shipping Separately

Special CB Ordered Dok- Commander® CB Ordered

» **Informational signs/decals languages:**

French Canadian English (Standard)

Portuguese Spanish

All electrical components, connections and wiring are UL listed or recognized. The leveler requires a power source of:

308-415/3/60 (Int'l NO Euro) 575/3/60

380-415/3/50 (Int'l NO Euro) 440-480/3/60

380-415/3/50, 24V Coil (Euro only) 208-240/3/60

ITL(OHD Open/Raise Leveler):

TL (OHD Oprtr to Oprtr Leveler) Switch by Others

ITL (OHD Open to Oprtr Leveler) Photoeye by RH®

ITL (OHD Open to Oprtr Leveler) RH® Limit Switch

Maintenance Features

Integral Safe-T-Strut™ Maintenance Support System extends through the lip and provides: interior visual notification, continuous protection even if impacted by a forklift and lock out tag out.

Maintenance Pendant Receptacle

Standard Warranty

Five-year parts and one-year labor warranty. All warranties subject to standard limitations on liability. 12-Month Limited Money-Back Guarantee of Customer Satisfaction*. Up to 20-Year Money-Back Warranty based on the Dock Leveler Investment Guide (DLIG).

Dock Leveler Investment Guide (DLIG)

Dock Leveler Investment Guide (DLIG)

Max. Gross Load (1,000 lbs.): 5 7.5 10 12.5 15

17.5 20 22.5 25 27.5 30 35

Trucks/Day: 0-8 9-16 17-24

Specialty Leveler Features

Emergency Stop

Smooth Deck & Lip

Abrasive Ramp Surface

Automatic Return To Dock (ARTD)

Cold Storage / Corrosive Applications

Stainless Steel Hinge Pins **Zinc metalized finish**

Insulation Options: Foam (Deck) Foam (Deck & Stringers)**

Client Info

Company Name _____

Date _____

RITE-HITE
ALWAYS LOOKING AHEAD

RHJ5PKG
www.ritehite.com

8900 North Arbon Drive
Milwaukee, WI 53223, USA

P 414-355-2600 (800-456-0600)

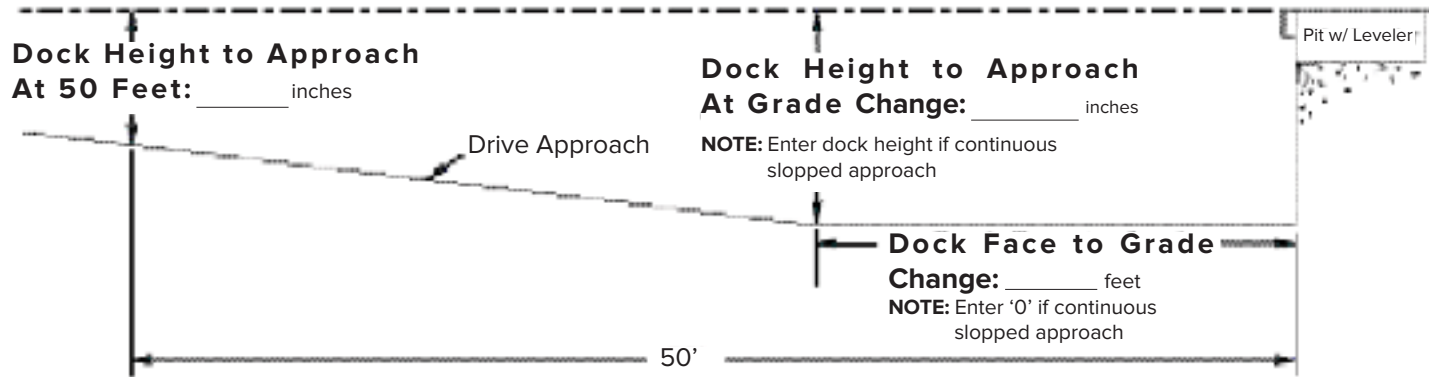
F 414-355-9248

Rite-Hite®, Safe-T-Lip®, Safe-T-Strut™, Smooth Transition Dok System®, Dok-Lok®, Dok-Commander® and Hydra-Rite™ are trademarks of Rite-Hite Holding Corporation. Rite-Hite products are covered by one or more U.S. patents with other U.S. and foreign patents pending. The information herein is provided as a general reference only regarding the use of the applicable products. The specifications stated here are subject to change.

(1) "DOCK SHOCK: The Impact of Whole-Body Vibration on an Aging Workforce" (November 2013)

(2) Lavender, Ph.D., S., & Mehta, M.S., J. (2012). Ergonomic evaluation of new dock levelers on the tibial shock experienced

Pit Style Leveler Supplement



Typical Trailer Bed Height: _____

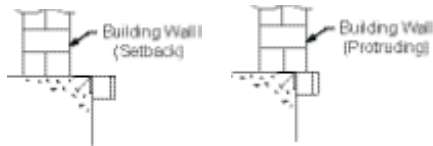
Trailer Bed Height Minimum: _____

Trailer Bed Height Maximum: _____

Dock Height: _____

Bumper Projection: _____

Amount Wall Setback/Protruding: _____



Approach:

- (L) Level Approach
- (N) Not Applicable
- (S) Sloped Approach (Fill In DIMS Below)

Wall Position To Dock Face:

- (F) Flush Wall
- (N) No Wall (Open Dock)
- (P) Protruding Wall
- (S) Setback Wall

Primary Material Handling Equipment:

- (C) Carts/Dollies
- (E) Electric Fork Truck
- (G) Gas Fork Truck
- (H) Hand Loading/Conveyors
- (O) Other
- (PE) Electric Pallet Jack
- (PM) Manual Pallet Jack
- (X) Not Applicable

3 Wheeled Fork Trucks:

- (N) No
- (Y) Yes